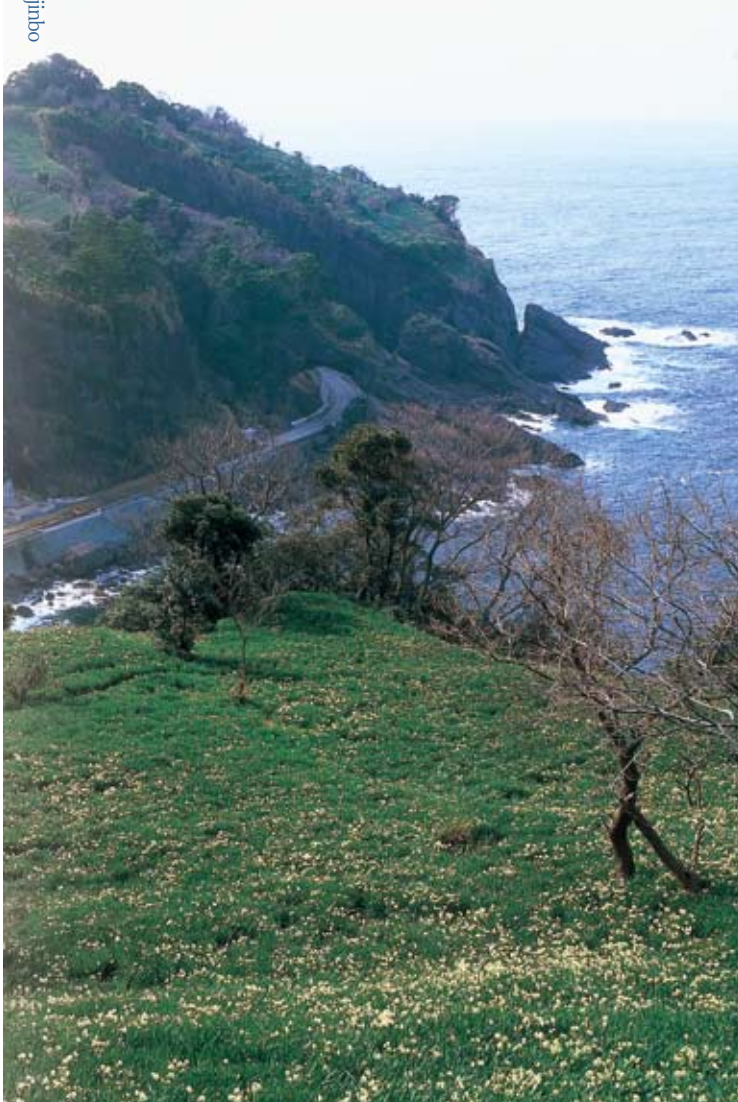


# Echizen Coast - Tojinbo Cliffs

## Coastal Drive Route



### Echizen Coast

This coastline, which has been designated as a quasi-national park, is ideal for feeling the sea breeze as you drive along. You will be impressed by the tranquil yet occasionally rough Japan Sea, surprised by the unusual rock formations of Tojinbo Cliffs, and spiritually uplifted by the pretty daffodils. Fukui's representative winter specialty, Echizen crab, is a delicacy not to be missed.

#### ●Access to Tojinbo Cliffs:

From the Hokuriku Expressway Fukui-kita I.C. take National Route 416 in the direction of Mikuni/Awara for about 50 min.

From JR Fukui Station take the Echizen Railway Mikuni Awara Line to "Mikuni Station", and transfer to a bus for Tojinbo Cliffs. (About 1 hour)

#### ●Access to Echizen Coast(Echizen Suisen-no-Sato Park):

From the Hokuriku Expressway Fukui I.C. take National Route 8 in the direction of Sabae, and turn onto National Route 365 in the direction of Echizen Coast (about 1 hour).

From Keifuku Bus Terminal take the Gumizaki Line bus, and get off at "Echizen Suisen-no-SatoKoen" (about 1.5 hours).

### Daianzenji Temple



Built in 1658 by the fourth feudal lord of Fukui, Matsudaira Mitsumichi, this is the family temple of the Fukui lords. Lay sermons that clearly explain the spirit of Zen, vegetarian

dishes, training in Zen meditation (all reservations required), and beautiful irises in early summer attract many visitors. ☎0776・59・1014

### Takasu / Ayukawa / Koshino Beach



The beaches along the Echizen Coast are known for the clearness of the seawater. There are activities to enjoy all year round-marine sports, fishing, going for drives, etc.

### Tojinbo Cliffs

These dynamic, impressive pyroxene andesite prismatic structures are the only such rock formations in Japan, and only one of three in the world. The 50-meter high sheer rock faces that stretch out along one kilometer of coastline look like a



giant sculpture created by Mother Nature. The rock faces are well worth seeing from the vantage point of a pleasure boat. Designated as a national natural monument.



### Echizen crab

Echizen crab, or snow crab, is the king of seafood from the Japan Sea. The male is called "zuwaigani", and the female "seikogani". Freshly boiled, these crabs are full of delicious, sweet juice. The miso (organs) and eggs are delicacies enjoyed by connoisseurs.

### Deep-water shrimp

Shrimp with a melt-in-your-mouth sweetness and smooth texture. Those with transparent blue eggs are a real delicacy.

